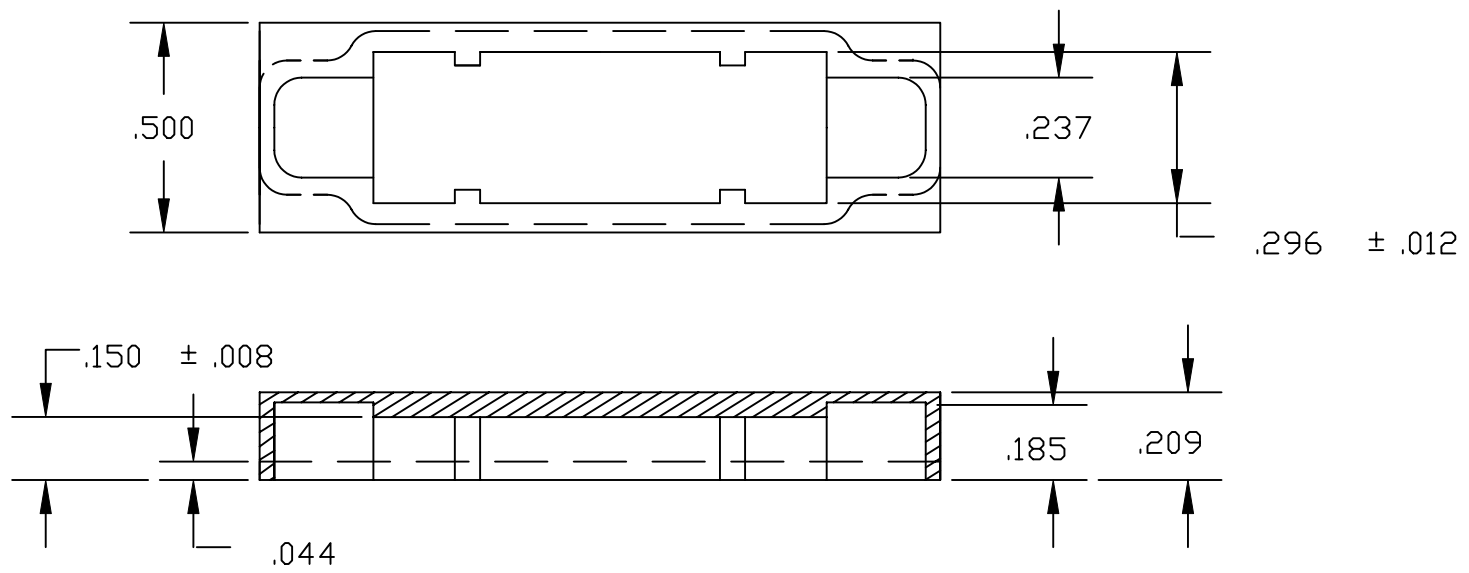


DESCRIPTION: SHIELDED DUST CAPS



ATTENUATION EFFICIENCY:

| FREQUENCY MHZ | ATTENUATION dB | FREQUENCY MHZ | ATTENUATION dB | FREQUENCY MHZ | ATTENUATION dB | FREQUENCY MHZ | ATTENUATION dB |
|---------------|----------------|---------------|----------------|---------------|----------------|---------------|----------------|
| 0.1 | 125 | 4 | 100 | 150 | 90 | 700 | 68 |
| 0.2 | 127 | 6 | 90 | 200 | 100 | 800 | 56 |
| 0.4 | 122 | 15 | 90 | 250 | 82 | 900 | 58 |
| 0.6 | 123 | 40 | 87 | 300 | 71 | 1000 | 52 |
| 1 | 120 | 60 | 82 | 400 | 70 | | |
| 2 | 118 | 100 | 87 | 600 | 67 | | |

"X XX" IN PART NUMBER
 ——— POSITION (09, 15, 25)
 ——— GENDER: 1 = MALE (BLUE)
 2 = FEMALE (RED)

MATERIAL: ABS WITH 50 MICRON GRAPHITE COATING
 RoHS COMPLIANT

| | | | | |
|------------------|---|----------------------------|----------------------------|------------------|
| | THESE DRAWINGS AND SPECIFICATIONS ARE THE PROPERTY OF NorComp AND SHALL NOT BE REPRODUCED, COPIED OR USED AS THE BASIS FOR THE MANUFACTURE OF SALE OF APPARATUS WITHOUT WRITTEN PERMISSION. | | DRAWN: PAM JENKINS | DATE: 10-9-00 |
| | | | CHECKED: | DATE: |
| <h1>NorComp</h1> | | SCALE: | SHEET 1 OF 1 | REV 1 |
| | | DWG NO. 160-020-XXXR000 | | |